



©2020 Schmidt Builders

\$437,300

Style Ranch

Sq. Ft. 1,847

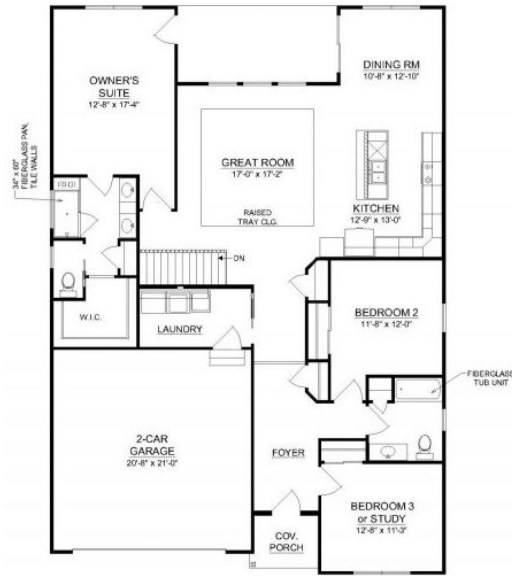
Bed 3

Bath 2

Garage 2-Car
with garage door openers

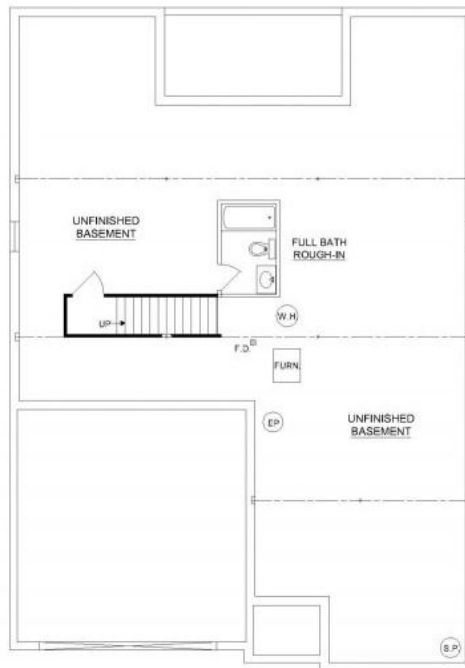
Home Features:

- Covered entry
- Luxury vinyl plank floors
- Stainless steel GE appliances
- 42" wall cabinets
- Kitchen island
- Solid surface countertops
- 9' ceilings on main level
- Luxury owner's suite and bath
- Delta Faucets throughout
- Separate laundry room with sink
- Large covered patio
- Full unfinished lower level
- Maintenance free living with maintained lawn care and snow removal
- 12-month warranty



Main Level

©2020 Schmidt Builders



Lower Level

©2020 Schmidt Builders

Because we are constantly improving our product, we reserve the right to change product features, brand names, dimensions, architectural details and design. This brochure is for illustrative purposes only and is not part of any legal binding contract. Pricing and availability subject to change without notice. 7/20/21

Traditions Begin Here.



Larry Thinner, Realtor | (513) 720 - 9900 | larry.thinner@gmail.com | schmidtbuilders.com

Jaime Thinner-Neumaier, Realtor | (513) 379-1254 | jthinnerneumaier@sibcycline.com

