



The Turin

Elevation A

RANCH • 2,069 SQ. FT • 3 BEDROOMS • 2 BATHS • 2-CAR GARAGE

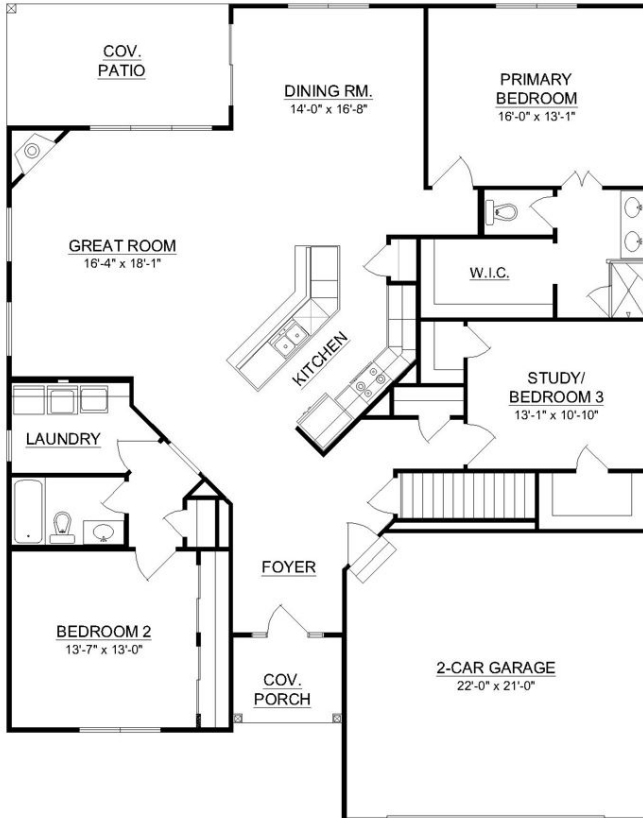
Covered entry • Covered back porch with access from dining room • Open kitchen with center island and dining area • Large owner's suite with 4 piece bath with dual sinks and oversized shower with corner seat • Corner fireplace in great room • Large laundry room with sink • Optional finished or unfinished lower level • Optional 3-car garage



Traditions Begin Here. | (513) 779-9300 | schmidtbuilders.com

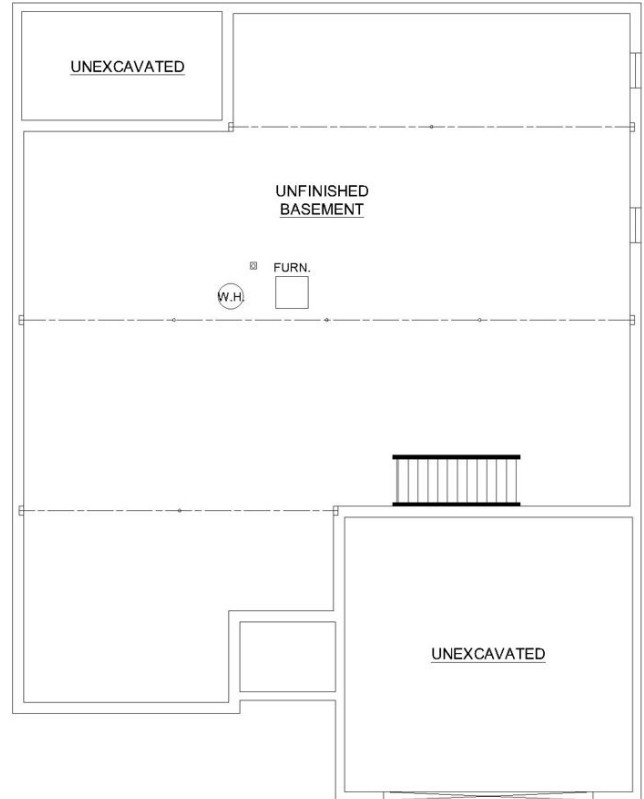
Schmidt Builders. 3rd generation home builder since 1958.





Main Level

©2022 Schmidt Builders



Optional Lower Level

©2022 Schmidt Builders

Because we are constantly improving our product, we reserve the right to change product features, brand names, dimensions, architectural details and design. This brochure is for illustrative purposes only and is not part of any legal binding contract. Floor plans may vary by elevation. Additional options available. Pricing and availability subject to change without notice. 6/24/22